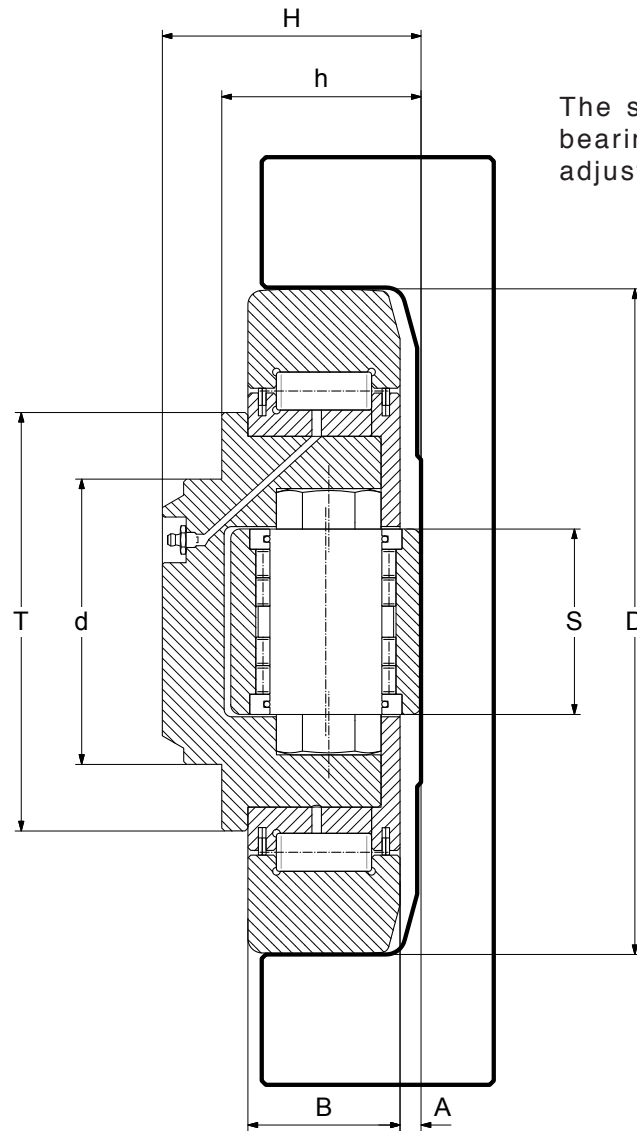


**JUMBO CR BEARINGS**



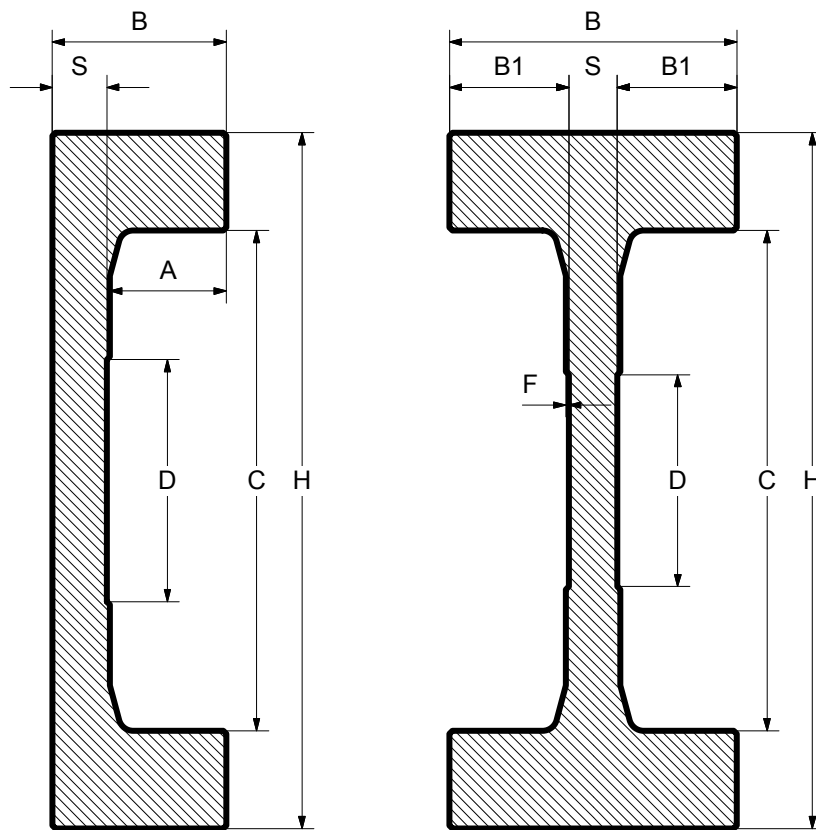
The side rollers on Jumbo bearings are eccentrically adjustable

**FC = C Section**  
**FM = I Section**

BEARING REFERENCE	Dimensions (mm)					B	A	S	r	Radial	Radial	Axial	Axial	PROFILE REF C / I SECTION
	D	T	d	H	h					C (kN)	C <sub>0</sub> (kN)	C (kN)	C <sub>0</sub> (kN)	
4.089	165	113	80	69	53 - 56	40	5	50	3	213	388	85	133	FC165 / FM165
								40				46	79	
4.090	190	124	100	84.5	64.5 - 67.5	48	6.5	60	4	266	500	100	180	FC190 / FM190
								40				46	79	
4.091	220	146	110	94.5	74.5 - 77.5	58	6.5	75	5	326	681	138	257	FC220 / FM220
								60				101	173	
4.092	250	168	120	102	77 - 80	60	7	75	5	369	748	138	257	FC250 / FM250
								60				101	173	
4.093	280	188	150	119.5	89.5 - 93.5	72	7.5	90	5	489	1066	182	488	FC280 / FM280
								60				101	173	
4.094	320	218	140	135	110 - 114	85	10	90	8	642	1370	210	422	Profile made to order
4.095	340	240	140	150	120 - 124	89	10	100	8	735	1600	232	463	Profile made to order
4.096	390	242	170	200	150 - 154	118	10	100	8	1050	2243	232	463	Profile made to order

C = Dynamic Load Capacity  
C<sub>0</sub> = Static Load Capacity

**JUMBO CHANNEL**  
Overview



Material: S355

**C SECTION**

Profile	Dimensions (mm)						Weight	Ex	Ey	Lx	Ly	Wx	Wy
Reference	C	H	B	S	D	A	(kg / m)	(mm)	(mm)	(cm4)	(cm4)	(cm3)	(cm3)
FC165	165.4	230	57.5	18	80	38.5	53.3	19.9	115	4410.5	174.6	383.5	87.5
FC190	190.4	255	77	22	80	53	73.7	25.9	127.5	7631.6	434.2	598.6	167.7
FC220	220.4	295	85	20	125	62.5	86.1	29	147.5	12633	672.0	856.4	231.7
FC250	250.4	344	94	26.5	125	65.5	122.8	32.4	172	23372	1117.4	1358.8	344.9
FC280	280.4	394	114	26.5	125	85.5	161.85	40.8	157	42474	2354.8	2156	577

For profiles FC320, FC340 and FC390 please refer to our website.

**I SECTION**

Profile	Dimensions (mm)							Weight	Ex	Ey	Lx	Ly	Wx	Wy
Reference	C	H	B	S	D	B1	F	(kg / m)	(mm)	(mm)	(cm4)	(cm4)	(cm3)	(cm3)
FM165	165.4	230	95	16	70	39.5	1	72.7	47.5	115	6894	472	600	99
FM190	190.4	255	130	20	70	55	2	100.4	65	127.5	12003	1203	941	185
FM220	220.4	295	150	20	90	65	2	126.3	75	147.5	20991	2119	1423	283
FM250	250.4	345	160	25	90	67.5	2	172.7	80	171.5	37838	3274	2206	409
FM280	280.4	375	190	30	120	80	2	212.8	95	187.5	55163	5492	2942	578