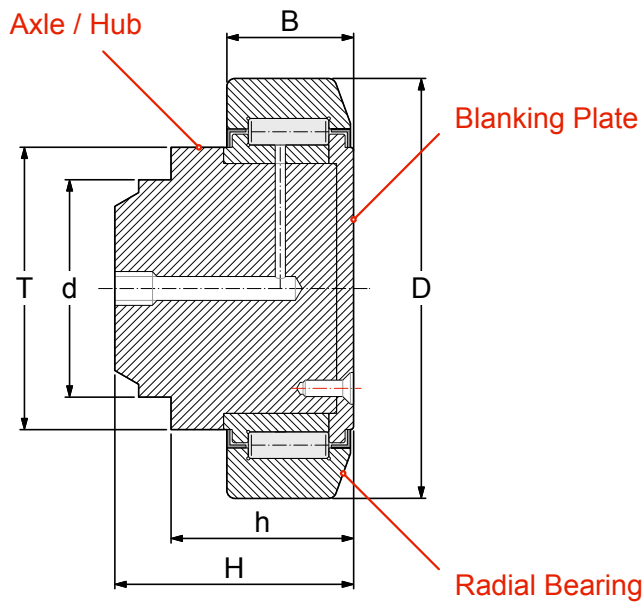


RADIAL BEARINGS



BEARING REFERENCE	Dimensions (mm)							C kN	C ₀ kN	PROFILE REF
	D	T	d	H	h	B	r			
2.2062	62	42	30	36.5	29.5	20	3	39	65	2890
2.2070	70.1	48	35	42	34	23	4	56	93	2867
2.2077	77.7	53	40	45.5	34	23	4	57	101	2810
2.2088	88.4	59	45	54	41	30	4	82	134	2811
2.2107	107.7	71	60	65.5	51.5	31	5	96	174	2862
2.2123	123	80	60	67.8	51.5	37	5	131	243	2891
2.2149	149	103	60	74	54	45	3	183	353	2757

C = Dynamic Load Capacity

C₀ = Static Load Capacity

See page 35 for information on how to select the correct size of bearing and mating steel channel.