

# EURO-VEE BEARINGS

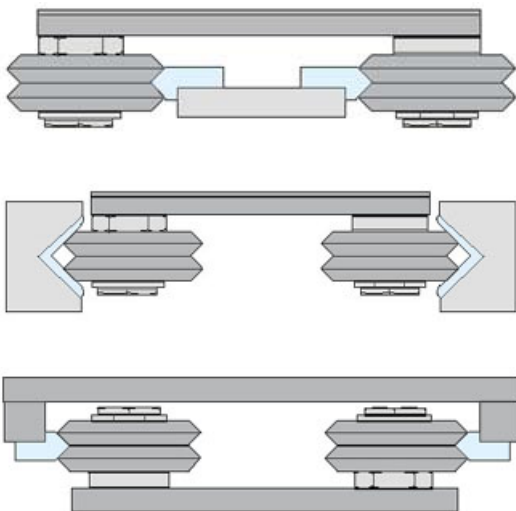


Euro-Vee Bearings provide an economic and versatile solution to many linear motion problems. E-V Bearings have a simple design and are able to run either inside or on top of a 90° rail. The bearings can be concentrically or eccentrically mounted for an accurate fit and are available in both shielded and sealed (X) versions. Available from stock in four popular sizes:

Bearing	I/D (mm)	O/D (mm)	Width	C (kN)	C (kN)	Weight (g)
W1	4.763	19.56	7.87	2.2	1.0	11
W2	9.525	30.73	11.1	4.9	2.5	38
W3	12	45.72	15.88	9.4	4.9	130
W4	15	59.94	19.05	14.8	8.2	280

For more details of this range and other products visit our website...

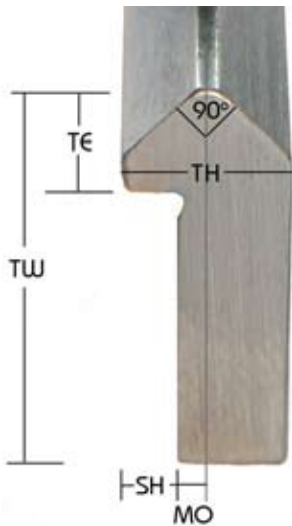
[www.euro-bearings.com](http://www.euro-bearings.com)



Tel. 01908 511733 Fax. 01908 511713

EURO-BEARINGS LTD

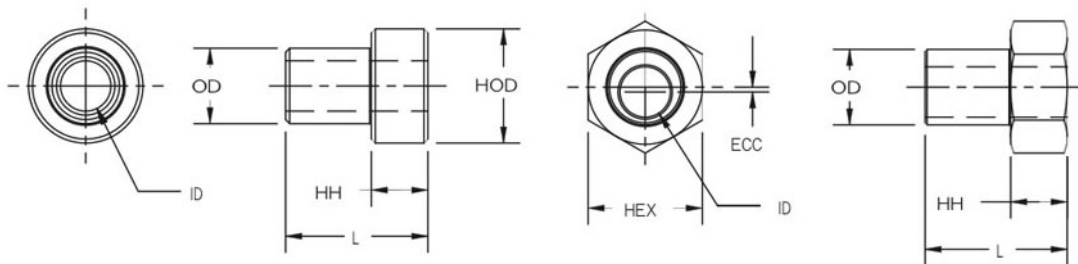
# EURO-VEE RAILS & BUSHES



The T rail has an induction hardened & polished vee edge & is designed to bolt onto any square edge, giving the end user total flexibility in their carriage design. Made from 1045 Carbon Steel, the body of the rail remains soft so mounting holes can easily be drilled.

T RAIL	TW (mm)	TH (mm)	TE (mm)	MO (mm)	SH (mm)
T-1	11.1	4.75	3.18	0.79	1.57
T-2	15.88	6.35	4.75	0.79	2.39
T-3	22.23	8.71	6.35	1.6	2.77
T-4	26.97	11.1	7.92	2.39	3.18

There are 2 different types of bushings - eccentric (BX) & concentric (B). Both are made from carbon chrome steel. By rotating the eccentric BX bushing on its fastener, the clearance between the wheel and track can be adjusted. This enables a preload to be applied. The concentric (B) bush should carry the majority of the radial load.



CONCENTRIC

ECCENTRIC

Concentric	Eccentric	To fit Brg	L	OD	Hex (Inch)	ID	Ecc	HH	HOD	Bolt (Inch)
B-1	BX-1	EV-W1	13.97	4.76	7/16	3.56	0.30	6.35	11.18	No 6
B-2	BX-2	EV-W2	17.93	9.52	9/16	6.35	0.61	7.14	14.22	1/4
B-3	BX-3	EV-W3	25.15	11.99	3/4	7.92	1.07	9.53	19.05	5/16
B-4	BX-4	EV-W4	29.90	15.00	7/8	9.53	1.52	11.1	22.35	3/8

For more details of this range and other products visit our website...

[www.euro-bearings.com](http://www.euro-bearings.com)

Tel. 01908 511733 Fax. 01908 511713

EURO-BEARINGS LTD