

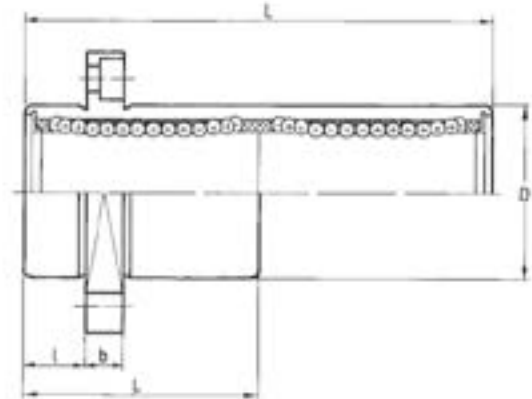
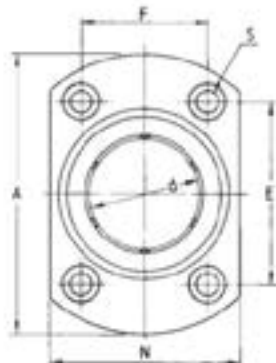
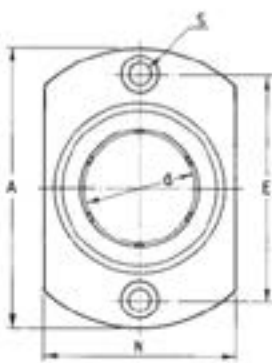
REVERSE FLANGED BALL BUSHINGS

This ball bushing is an alternative version of the flanged ball bushings. The special four-bolt flange allows a reversed mounting, in which the shorter part of the bushing is inserted into the housing bore and the longer part is protruding.

The reversed-flange ball bushings are available with two seals and a plastic ball retainer as FK22-3.. (standard length) and as FK42-3.. (tandem length).

If required the ball bushing is available unsealed - part numbers FK20-3.. and FK40-3..

They are also available with all parts manufactured from steel. Ordering reference number FK22-0.. or FK42-0..



PART (2 seals)	d	D	L	b	I	A	N	E	F	S	Load C (N)	Load C ₀ (N)	Weight (kg)
FK22-306	6	12	19	5	5	28	18	20		M3	206	265	0.02
FK22-308	8	15	24	5	5	32	21	24		M3	280	400	0.03
FK22-310	10	19	29	6	6	40	25	29		M4	372	549	0.06
FK22-312	12	21	30	6	6	42	27	32		M4	520	800	0.07
FK22-316	16	28	37	6	6	48	34	31	22	M4	790	1200	0.11
FK22-320	20	32	42	8	8	54	38	36	24	M5	900	1400	0.17
FK22-325	25	40	59	8	8	62	46	40	32	M5	1000	1600	0.33
FK22-330	30	45	64	10	10	74	51	49	35	M6	1600	2800	0.39
FK22-340	40	60	80	13	13	96	96	55.1	55.1	M8	2200	4100	1.06
FK22-350	50	80	100	13	13	116	116	69.3	69.3	M8	3900	8100	2.20

PART (2 seals)	d	D	L	b	I	A	N	E	F	S	Load C (N)	Load C ₀ (N)	Weight (kg)
FK42-306	6	12	35	5	5	28	18	20		M3	323	530	0.03
FK42-308	8	15	45	5	5	32	21	24		M3	440	800	0.05
FK42-310	10	19	55	6	6	40	25	29		M4	588	1100	0.09
FK42-312	12	21	57	6	6	42	27	32		M4	830	1600	0.10
FK42-316	16	28	70	6	6	48	34	31	22	M4	1250	2400	0.18
FK42-320	20	32	80	8	8	54	38	36	24	M5	1430	2800	0.25
FK42-325	25	40	112	8	8	62	46	40	32	M5	1590	3200	0.53
FK42-330	30	45	123	10	10	74	51	49	35	M6	2540	5600	0.65
FK42-340	40	60	151	13	13	96	96	55.1	55.1	M8	3500	8200	1.57
FK42-350	50	80	192	13	13	116	116	69.3	69.3	M8	6200	16200	3.60