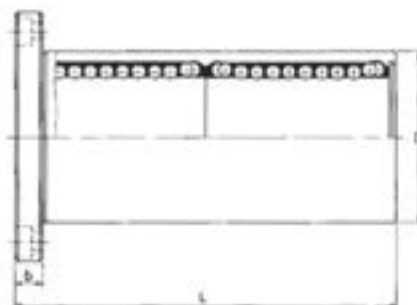
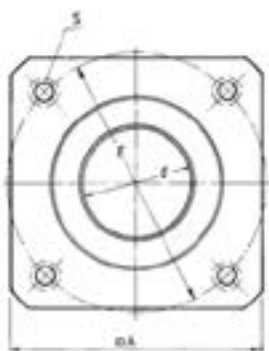


TANDEM SQUARE FLANGED BUSHES

These tandem (i.e. double length) square flanged ball bushings are made to the European sizes and have the same characteristics and loadings as our popular range of round flanged ball bushings.

The flange provides a simple but robust mounting system. The ball bushing has 2 integral shaft wiping seals and a polyamide ball retainer.



PART (2 seals)	d	D	L	b	A	E	S	Load C (N)	Load C ₀ (N)	Weight (kg)
LMTK08UU	8	16	46	5	25	24	M3	430	780	0.05
LMTK12UU	12	22	61	6	32	32	M4	810	1570	0.08
LMTK16UU	16	26	68	6	35	36	M4	920	1780	0.16
LMTK20UU	20	32	80	8	42	43	M5	1370	2750	0.23
LMTK25UU	25	40	112	8	50	51	M5	1560	3140	0.47
LMTK30UU	30	47	123	10	60	62	M6	2490	5490	0.57
LMTK40UU	40	62	151	13	75	80	M8	3430	8040	1.38