

# OPEN ALUMINIUM LINEAR HOUSINGS

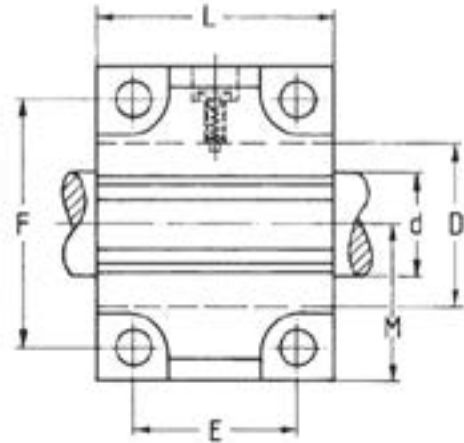
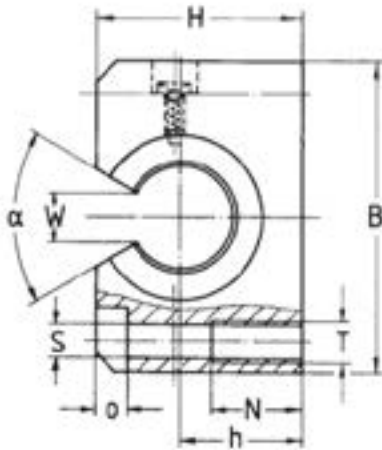
When mounting these Open Type Aluminium Sets the four securing holes should be provided with bolts to achieve the maximum load capacity and the best rigidity for every mounting position.

The housings are available equipped with different ball bushings.

Permutations available: (example is for 20mm bore)

Ball bushing with plastic cage and seals: AE37-220  
 All steel ball bushing without seal: AE37-020  
 All STAINLESS steel bushing without seal AE37-520

The sealed type (AE37-2..) can operate up to 80° C.  
 For high temperature applications specify the steel / unsealed version AE37-0..



PART	d	B	H	h	L	D	E	F	M	S	T	N	O	W	$\alpha$	Load C (N)	Load C <sub>0</sub> (N)	Weight (kg)
AE37-212	12	42	28	18	39	22	23	32	21	4.3	M5	11	4	7.5	78	520	810	0.10
AE37-216	16	52	35	22	43	26	26	40	26	5.3	M6	13	5	10	78	630	1000	0.17
AE37-220	20	60	42	25	54	32	32	45	30	6.6	M8	18	6	10	60	940	1570	0.28
AE37-225	25	76	51	30	67	40	40	60	38	8.4	M10	22	8	12.5	60	1000	1720	0.60
AE37-230	30	86	60	35	79	47	45	68	43	8.4	M10	22	8	12.5	50	1640	2890	0.90
AE37-240	40	108	77	45	91	62	58	86	54	10.5	M12	26	10	16.8	50	2250	4290	1.70
AE37-250	50	130	88	50	113	75	50	108	65	13.5	M16	34	12	21	50	3890	8470	2.80

If the direction of the load is not acting at right angles to the mounting surface please refer to notes on page 5.

Available with  $\pm 0.02$ mm tolerance for side mounting

These Aluminium Sets are also available slotted as Adjustable Type sets. Order part no AE38- ... with suffix depending on ball bushing required (see above). In general, because of the close tolerances of ball bushings fitted to our aluminium sets we do not recommend the use of the adjustable type.