

# OPEN SIDED ALUMINIUM LINEAR HOUSINGS

If the direction of the load is acting towards the open side of an open type ball bushing the load capacity is severely reduced.

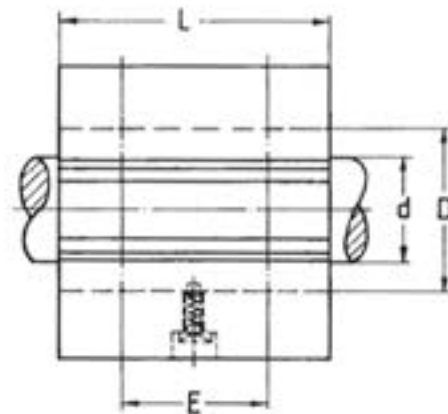
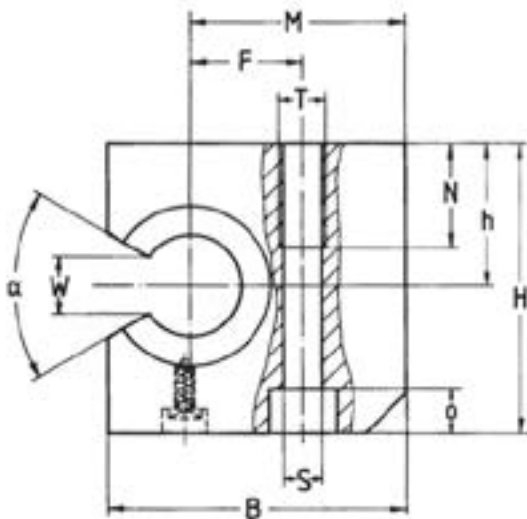
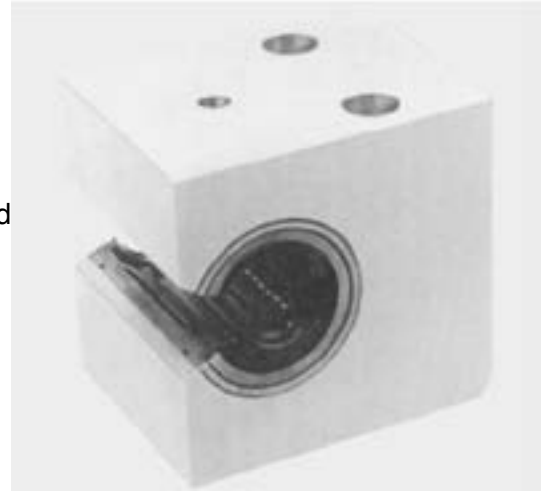
These open sided linear sets have been developed to overcome this issue and are designed to optimise rigidity and load capacity for side mounted applications.

As with our other sets these sets are available with different types of ball bushings.

Permutations available: (example is for 20mm bore)

- Ball bushing with plastic cage and seals: LE71-220
- All steel ball bushing without seal: LE71-020
- All STAINLESS steel bushing without seal LE71-520

The sealed types can operate up to 80°C.  
For higher temperatures specify the unsealed type (LE71-020).



PART	d	B	H	h	L	D	E	F	M	S	T	N	o	W	$\alpha$	Load <sup>+</sup> C (N)	Load <sup>+</sup> C <sub>0</sub> (N)	Weight (kg)
LE71-220	20	60	60	30	54	32	30	22	43	8.4	M10	22	9	17	60	880	1400	0.40
LE71-225	25	75	72	35	67	40	36	28	54	10.5	M12	26	11	21	60	1000	1600	0.75
LE71-230	30	86	82	40	79	47	42	34	61	13.5	M16	34	13	21	50	1600	2800	1.15
LE71-240	40	110	100	45	91	62	48	43	78	16.0	M20	43	14	27	50	2200	4100	2.00
LE71-250	50	127	115	50	113	75	62	50	89	17.5	M20	43	17	33	50	3900	8100	3.50

- Available with  $\pm 0.02$  tolerance for side mounting. The fixing screw is on the opposite side for these sizes.
- + If the direction of the load is not acting at 90° to the mounting surface please refer to the notes on page 5.

These aluminium sets are also available slotted as adjustable type sets. Order part no LE72- ... with suffix depending on ball bushing required (see above). In general, because of the close tolerances of ball bushings fitted to our aluminium sets we do not recommend the use of the adjustable type.