

COMPLETE SLIDING SYSTEM (CLOSED)

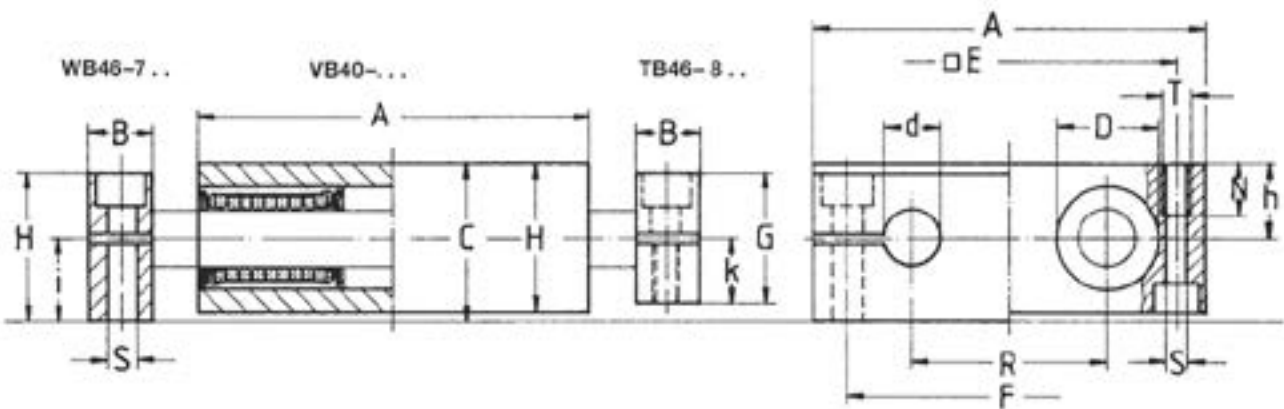
The major benefit of this quad housing is that it is much easier to set up than using multiple single housings or a torque resistant ball bushing. Each quad housing contains four ball bushings. The shafts are machined to order and can be supplied to any length (limited only by permissible deflection)

Two aluminium shaft end support blocks hold the shafts parallel and clamped (when bolted down) in position. The assembly can be arranged so that the table is fixed with the shaft ends free, or the shaft ends can be fixed so that the table is free. The ball bushings in the housing unit are sealed as standard.



For operating temperatures > 80° C (where the seals will be damaged) specify the all steel unsealed ball bushing type NB00- using part number VB40-0..

If you require corrosion resistant ball bushings these can be fitted – please specify VB40-5.. (where ..= shaft diameter).



SHAFT SUPPORTS		HOUSING	d	A	H	h	C	D	E	R	i	B	S	T	N	k	F	G	Load C (N)	Load C ₀ (N)
Fixed End	Free End																			
		VB40-208	8	65	23	15.5	24	16	55	32		4.3	M5	11					860	1640
WB46-708	TB46-808		8	65	23					32	12.5	12	5.5	M5		11	52	22		
		VB40-212	12	85	32	16	34	22	73	42			5.3	M6	13				1630	3120
WB46-712	TB46-812		12	85	32					42	18	14	6.6	M6		14	70	28		
		VB40-216	16	100	36	18	38	26	88	54			5.3	M6	13				1890	3560
WB46-716	TB46-816		16	100	36					54	20	18	9	M8		16	82	32		
		VB40-220	20	130	46	23	48	32	115	72			6.4	M8	18				2750	5600
WB46-720	TB46-820		20	130	46					72	25	20	11	M10		21	108	42		
		VB40-225	25	160	56	28	58	40	140	88			8.4	M10	22				3140	6400
WB46-725	TB46-825		25	160	56					88	30	25	13.5	M12		26	132	52		
		VB40-230	30	180	64	32	67	47	158	96			10.5	M12	26				5120	10800
WB46-730	TB46-830		30	180	64					96	35	25	13.5	M12		29	150	58		
		VB40-240	40	230	80	40	84	62	202	122			13.5	M16	34				7040	16000
WB46-740	TB46-840		40	230	80					122	44	30	17.5	M16		36	190	72		
		VB40-250	50	280	96	48	100	75	250	152			13.5	M16	34				12160	31600
WB46-750	TB46-850		50	280	96					152	52	30	17.5	M16		44	240	88		