

COMPLETE SLIDING SYSTEM (OPEN)

The open type quad housing is more cost effective and avoids the hassle of precisely adjusting four single housings or two tandem units.

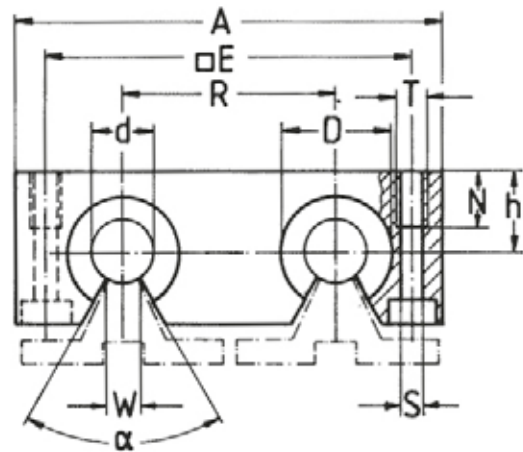
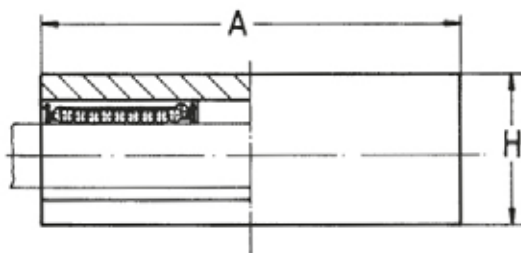
The user can choose between all the shaft support rails shown in this catalogue i.e. WU50, WS50, WU54, WN00 & WP11.

The steel shafts can be machined to the customer's requirements and if necessary can be joined to exceed the maximum length.

The housing contains four fully sealed open type ball bushings.

For temperatures $> 80^{\circ}\text{C}$ specify the all steel unsealed open type ball bushings NB30- with part number VB45-0..

To order the unit with stainless steel linear bearings specify VB45-5.. (where ..= shaft diameter).



PART	d	A	H	h	D	E	R	S	T	N	W	α	Load C (kN)	Load C_0 (kN)
VB45-212	12	85	30	18	22	73	42	5.3	M6	13	7.5	78	1.5	2.2
VB45-216	16	100	35	22	26	88	54	5.3	M6	13	10	78	1.8	2.7
VB45-220	20	130	42	25	32	115	72	6.4	M8	18	10	60	3.3	5
VB45-225	25	160	51	30	40	140	88	8.4	M10	22	12.5	60	5.8	9
VB45-230	30	180	60	35	47	158	96	10.5	M12	26	12.5	50	6.3	10.4
VB45-240	40	230	77	45	62	202	122	13.5	M16	34	16.8	50	10.9	15.6
VB45-250	50	280	93	55	75	250	152	13.5	M16	34	21	50	16.8	25.9