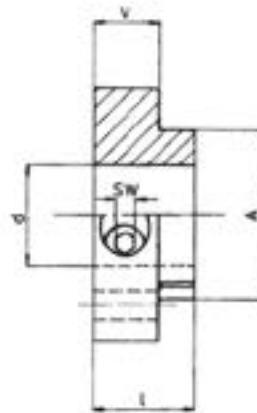
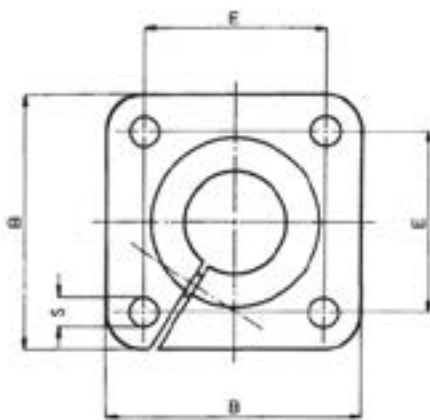


FLANGED SHAFT END SUPPORTS

These flanged shaft end support blocks are made from spheroidal graphite cast iron. They are designed to secure linear bearing shafts between bulkheads or other vertical surfaces. They are shaped to enable easy alignment against the mounting surface.



PART	d	B	I	A	E	S	V	SW
FH56-012	12	42	20	23	30	5.5	12	4
FH56-016	16	50	20	27	35	5.5	12	4
FH56-020	20	54	23	33	38	6.6	14	5
FH56-025	25	60	25	42	42	6.6	16	5
FH56-030	30	76	30	49	54	9	19	6
FH56-040	40	96	40	65	68	11	26	8
FH56-050	50	106	50	75	75	11	36	8

Tel. 01908 511733

www.euro-bearings.com

EURO-BEARINGS LTD