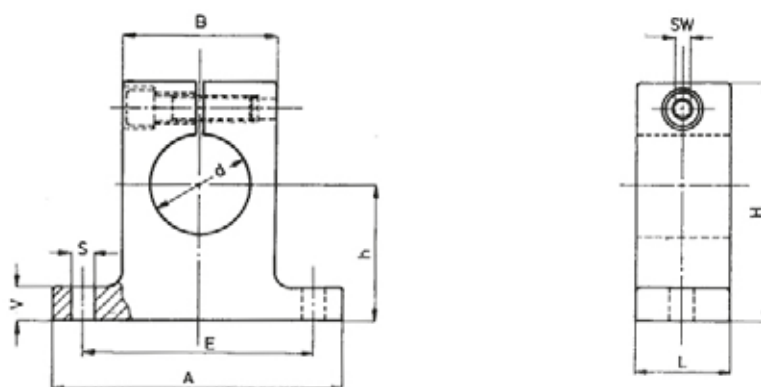


CAST IRON / ALUMINIUM SHAFT END SUPPORTS

These shaft end support blocks are for clamping and fixing down shaft ends. They have a guaranteed height tolerance of $\pm 15\mu\text{m}$ and are an economic way to mount shafts.

The WB55's are made from spheroidal graphite cast iron, offering high rigidity and high dimensional precision.

The WB56's are made from aluminium with the same tolerances as WB55. However they are less stiff due to the lower modulus of elasticity.



CAST IRON	ALUMINIUM	d	h	H	A	B	L	E	S	V
WB55-008	-	8	15	27	32	16	10	25	4.5	5
WB55-012	WB56-012	12	20	35	42	20	12	32	5.5 / 4.3	5.5
WB55-016	WB56-016	16	25	42	50	26	16	40	5.5 / 4.3	6.5
WB55-020	WB56-020	20	30	50	60	32	20	45	5.5 / 4.3	8
WB55-025	WB56-025	25	35	58	74	38	25	60	6.6 / 5.3	9
WB55-030	WB56-030	30	40	68	84	45	28	68	9.0 / 6.4	10
WB55-040	WB56-040	40	50	86	108	56	32	86	11 / 8.4	12
WB55-050	WB56-050	50	60	100	130	80	40	108	11 / 9.0	14
WB55-060	-	60	75	124	160	100	48	132	13.5	15
WB55-080	-	80	100	160	200	130	60	170	17.5	22

Tel. 01908 511733

www.euro-bearings.com

EURO-BEARINGS LTD