

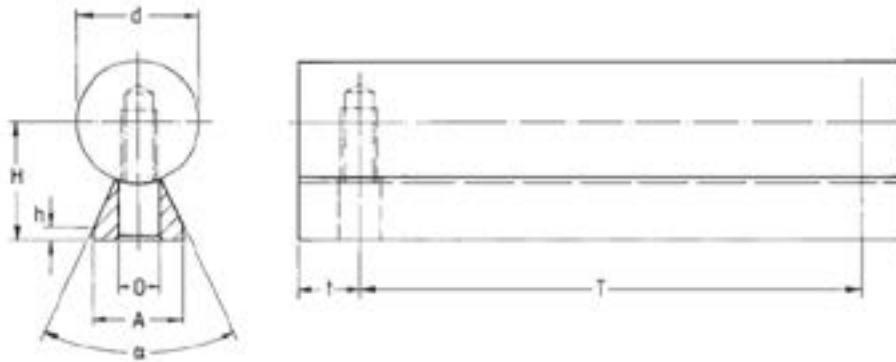
# PROFILED STEEL SHAFTS

These profiled supported steel shafts are the most compact available.

They are available in Aluminium, **WN00**-... up to a length of 3650 mm. The height tolerance is  $\pm 20\mu\text{m}$ .

They are also available in C45 Steel, **WP11**-...  
The maximum length of the shaft is 6000 mm, with 1800 mm sections of steel support bolted underneath.

Both rails are supplied bolted to precision steel shaft with radial holes at spacing 'T' (see table below).



Aluminium	Steel	d	A	H	h	$\alpha$ (deg)	T	$t_{\min}$	O	Bolt Size	Weight kg/m
WN00-312	-	12	11	14.5	3	50	75	20	4.5	M4	1.1 / -
WN00-316	WP11-316	16	14	18	3	50	75	20	5.5	M5	1.9 / 2.5
WN00-320	WP11-320	20	17	22	3	50	75	20	6.6	M6	2.9 / 3.8
WN00-325	WP11-325	25	21	26	3	50	75	20	9	M8	4.4 / 5.6
WN00-330	WP11-330	30	23	30	3	50	100	20	11	M10	6.2 / 7.6
WN00-340	WP11-340	40	30	39	4	50	100	20	13.5	M12	11 / 13.4
WN00-350	WP11-350	50	35	46	5	50	100	20	15.5	M14	17 / 20.2