

# ALUMINIUM SHAFT SUPPORT RAILS

These aluminium shaft support rails are for supporting shafts. They can be supplied individually or with shafts (Cf53 hardened & ground or X90CrMov18 stainless steel). Use with open type linear sets (AE37 & TE33) and open type ball bushings.

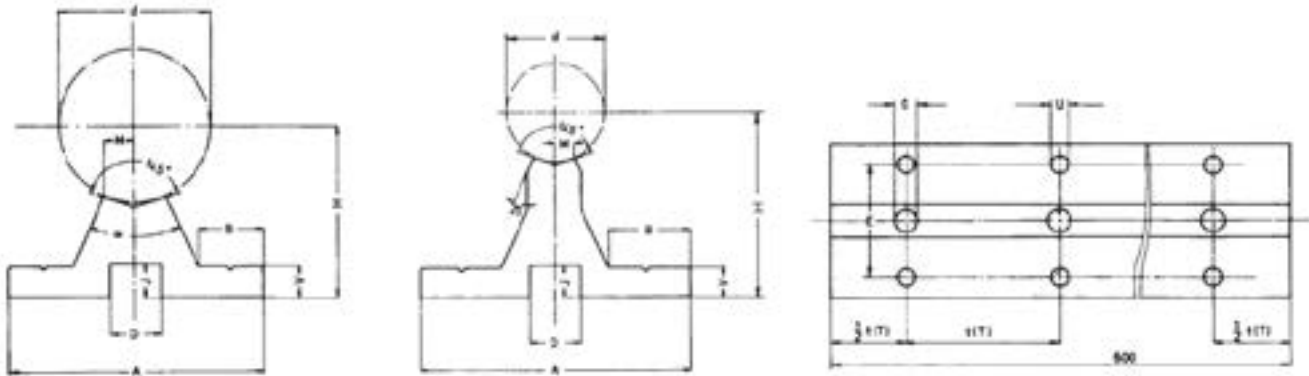
For continuous support of a shaft these 600mm support rails can be mounted end to end. Alternatively they can be cut into "sleepers" and spaced apart.

Two types of rail are available:  
The older type WS50-... with a higher height to shaft centre and the new lower type WU50-...

They are available ex stock unmachined or machined with bolt holes and fixing holes at two standard centres:

t (WU50-1..)

T (WU50-2..)



PART	PART	d	H	A	M	B	$\alpha$	V	D	J	O	Bolt	U	E	t(1) hole spacing	T(2) hole spacing
WU50-012		12	22	40	2.9	12	50	5	8	4.5	4.5	M4X20	4.5	29	75	120
WU50-016		16	26	45	3.5	13	50	5	9.5	5.5	5.5	M5X20	5.5	33	100	150
	WS50-016	16	30	48	3.5	14		5	9.5	5.5	5.5	M5X25	5.5	33	100	150
WU50-020		20	32	52	4.4	14	50	6	11	6.5	6.6	M6X25	6.6	37	100	150
	WS50-020	20	38	56	4	15		6	11	6.5	6.6	M6X30	6.6	37	100	150
WU50-025		25	36	57	5.4	15	50	6	14	8.5	9	M8X30	6.6	42	120	200
	WS50-025	25	42	60	5	15		6	14	8.5	9	M8X35	6.6	42	120	200
WU50-030		30	42	69	5.5	19	50	7	17	8.5	11	M10X35	9	51	150	200
	WS50-030	30	53	74	6	19		8	17	10.5	11	M10X40	9	51	150	200
WU50-040		40	50	73	7.5	17	50	8	17	10.5	11	M10X40	9	55	200	300
	WS50-040	40	60	78	8	19		8	19	12.5	11	M10X45	9	55	200	300
WU50-050		50	60	84	9.5	21	46	9	19	12.5	13	M12X45	11	63	200	300
	WS50-050	50	75	90	10	24		10	19	12.5	13	M12X55	11	63	200	300
WU50-060		60	68	94	12.5	23	46	10	22	14.5	15	M14X50	11	72	300	-
	WS50-060	60	80	100	12	25		12	22	14.5	15	M14X55	11	72	300	-
WU50-080		80	86	116	17	27	46	12	25	16.5	17	M16X60	13	92	300	-

Tel. 01908 511733

www.euro-bearings.com

EURO-BEARINGS LTD